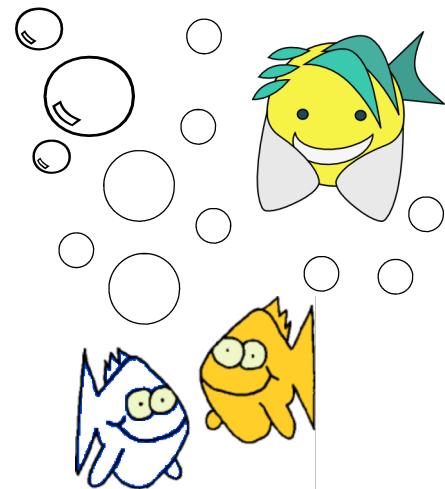


# Drinks & Desserts

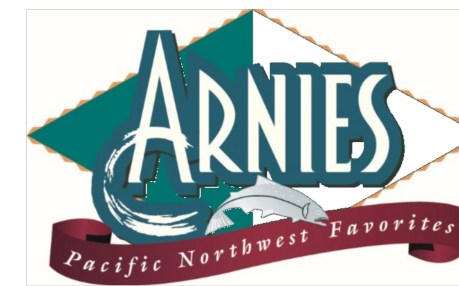


|  |      |
|--|------|
| <b>Shirley Temple</b>                      | 4.00 |
| <b>Roy Rogers</b>                          | 4.00 |
| <b>Martinelli's Sparkling Cider</b>        | 6.00 |
| <b>Hot Cocoa</b>                           | 5.00 |
| <b>Hot Apple Cider</b>                     | 6.00 |
| <b>Lemonade</b>                            | 4.00 |
| <b>Flavored Lemonade</b>                   | 4.00 |
| <i>Peach, Mango, Strawberry, Raspberry</i> |      |
| <b>Kid's Sundae</b>                        | 6.00 |
| <b>Root Beer Float</b>                     | 8.50 |

# Arnies Word Search

|   |   |   |   |   |   |   |   |   |   |   |   |
|---|---|---|---|---|---|---|---|---|---|---|---|
| W | P | Y | H | S | I | F | Y | L | L | E | J |
| L | R | O | Y | S | T | E | R | G | P | D | O |
| N | D | O | P | C | O | I | R | O | O | S | J |
| S | U | J | P | R | O | R | L | C | B | U | R |
| M | N | O | C | W | A | L | G | R | E | P | V |
| A | G | A | P | T | A | N | I | N | Z | O | K |
| L | E | F | S | C | I | N | O | I | J | T | C |
| C | N | A | S | L | W | M | W | V | F | C | U |
| L | E | T | R | A | E | D | Z | F | R | O | D |
| S | S | O | R | N | U | T | W | M | C | G | O |
| B | S | P | A | R | S | A | L | M | O | N | E |
| H | T | G | D | K | B | T | T | A | Z | B | G |

- ANEMONE
- CLAMS
- DUNGENESS
- GEODUCK
- JELLYFISH
- LINGCOD
- OCTOPUS
- ORCA
- OYSTER
- PRAWN
- SALMON
- SCALLOP
- SEASTAR



# Kids Favorites



All kid's meals come with a complimentary glass of orange juice & sticky bun



|   |       |
|---|-------|
| <b>Scrambled Eggs &amp; Bacon</b><br>With brunch potatoes | 11.25 |
| <b>French Toast</b><br>With smoked bacon                  | 10.25 |
| <b>Belgian Waffle</b><br>With warm maple syrup            | 10.25 |
| <b>Northwest Fruit Waffle</b><br>With fresh whipped cream | 11.25 |
| <b>Ham &amp; Cheese Omelette</b><br>With brunch potatoes  | 11.25 |
| <b>Kids Cheeseburger</b><br>Served with French fries      | 11.00 |

Please be aware that a 4.5% service charge will be added to your bill. 100% is used to support fair wages for non-tipped hourly positions and sick pay benefits for all.